

# Balancing your power needs

## BEC32 range

The three phase integrated BEC32 range, with BS footprint, are ideal meters for the retrofit market, whether residential, commercial or light industrial. The meters are exceptionally hardy and robust, making them ideal for a wide variety of installation environments. An added feature of the range is the ability to detect tampering, even in the absence of an incoming supply.



### Features

- > Reverse energy measurement
- > Configurable tamper detection
- > Meter fully operational with only one phase powered
- > Programmable phase imbalance
- > Thermal protection of terminals



We see a world where we can all achieve more while using less



We help utilities maximise their service delivery



Our products, solutions and services are simple, efficient and innovative

# Product specifications

## Voltage ratings

Nominal voltage (-20% +15%) 220VAC - 230VAC  
 Supply frequency (±5%) 50Hz

## Current ratings

Base current ( $I_b$ ) 10A  
 Max current ( $I_{max}$ ) 100A  
 Min starting current  
     Class 1 40mA  
     Class 2 50mA  
 Utilisation category UC2

## Nominal power consumption

1.6W / 9VA

## Accuracy

Class 1 and 2 (maintained throughout life cycle of product)

## Over voltage rating

420VAC for 48 hours

## Short circuit rating

Short-circuit withstand 3.0kA

## Protection

Power overload	Meter tampering
Current overload	Thermal overload
Over / under voltage	Phase imbalance

## Environmental

Operating temperature -10°C to +55°C  
 Storage temperature -25°C to +70°C  
 Humidity 95% non-condensing  
 IP rating IP 54  
 RF immunity 30V/m

## Status indicators

Rate LED (1000 pulses / kWh)

## Installation

Footprint BS7856 - Asymmetrical  
 Insulation class Double insulation

## Terminals

Type	Live	Neutral
Maximum size	Cage clamp 25mm <sup>2</sup>	Cage clamp 25mm <sup>2</sup>

## Security

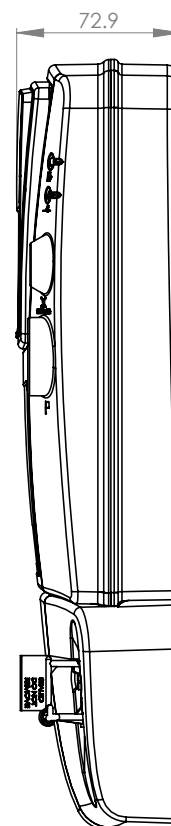
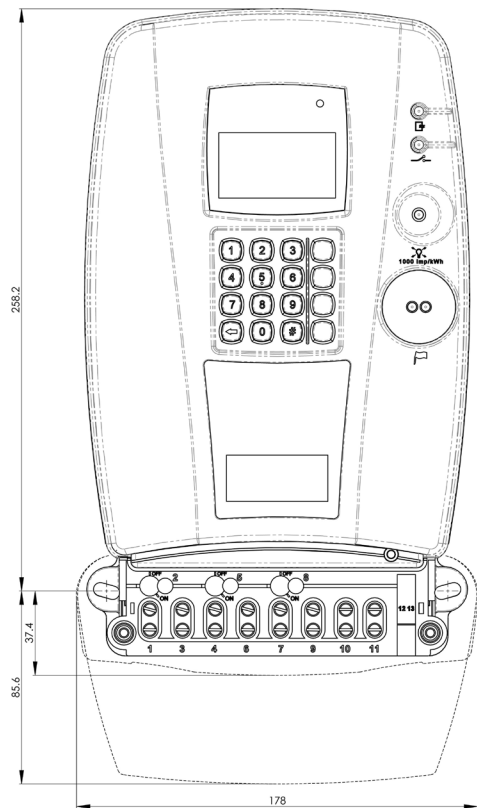
Meter housing Security seals  
 Terminal cover Serialised plastic security seals  
 Tamper protection Tamper terminal cover  
 Load disconnection on tamper detection  
 No power tamper (optional)

## Standards

IEC 62052-11	IEC 60068-2-6
IEC 62053-21	SANS 1524-1
IEC 62055-41	ISO 14001:2004
IEC 62056-21	ISO 9001:2008
IEC 60068-2-27	ISO 18001

## Packaging

Units per box 1  
 Box weight (incl box) 1.3kg  
 For further packaging information, kindly contact Conlog



## Conlog

Conlog (Pty) Ltd  
 Reg. No.1982/011895/07  
 PO Box 2332, Durban, 4000, South Africa  
 Tel +27 (31) 268-1111 Fax +27 (31) 268-1500  
 www.conlog.co.za  
 info@conlog.co.za